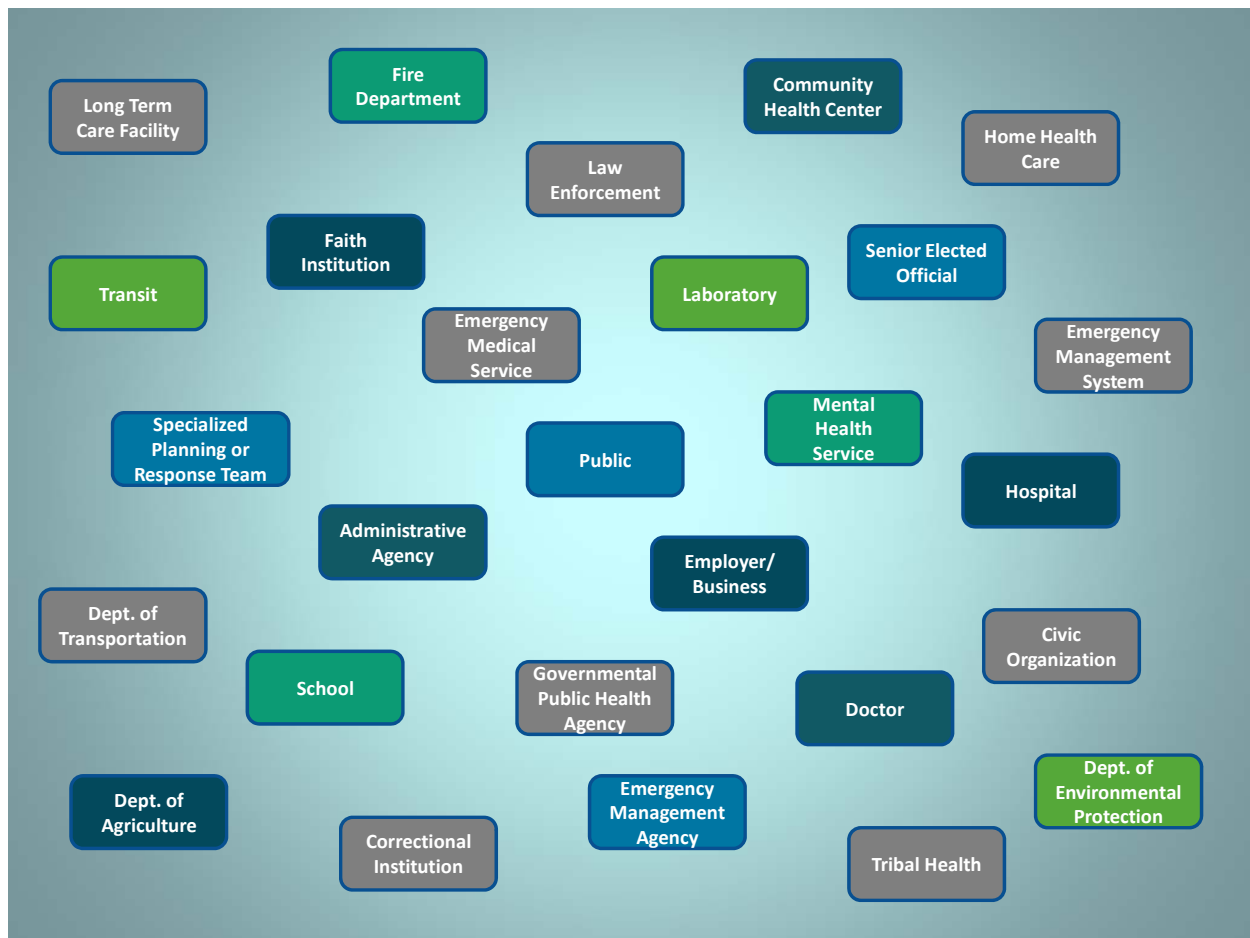


# The Public Health System



**ADMINISTRATIVE AGENCY:** An administrative agency is a department or agency at the federal, state, or local level that is not part of the legislative or judicial branches and that has power delegated to it by Congress or the state legislature to make administrative decisions. This definition does not include a department of agriculture, department of environmental protection, or department of transportation unless referred to in the aggregate (i.e., as part of a collective group of administrative agencies).

**CIVIC ORGANIZATION:** A civic organization is a non-profit entity that is organized primarily for civic, fraternal, or charitable purposes.

**COMMUNITY HEALTH CENTER:** A community health center is a public or incorporated nonprofit health facility that provides comprehensive primary health care to citizens in a community. This definition does not include facilities that primarily provide behavioral and mental health services.

**CORRECTIONAL INSTITUTION:** A correctional institution is an entity responsible for supervising adults and juvenile offenders, including their confinement, detention, care, and treatment.

**DEPARTMENT OF AGRICULTURE:** A department of agriculture is an executive branch agency at the federal or state level responsible for agricultural development. Responsibilities of departments of agriculture may also include animal health, plant health, and/or food safety and inspection.

# The Public Health System

---

**DEPARTMENT OF ENVIRONMENTAL PROTECTION:** A department of environmental protection is an executive branch agency at the federal or state level responsible for ensuring clean air, clean water, and clean soil. Responsibilities of departments of environmental protection may also include safe pesticide usage, waste recycling and reduction, and/or the cleanup of hazardous waste sites and spills.

**DEPARTMENT OF TRANSPORTATION:** A department of transportation is an executive branch agency at the federal or state level responsible for the safety and mobility of the transportation system.

**DOCTOR:** A doctor or a physician is an individual licensed to practice medicine and includes medical doctors, doctors of osteopathy, dental surgeons, and persons practicing medical dentistry. This definition does not include chiropractors, psychiatrists, or physicians whose primary practice relates to behavioral and mental health.

**EMERGENCY MANAGEMENT AGENCY:** An emergency management agency is a federal emergency management agency, state office or agency of emergency management, and/or county or municipal agencies that have been designated as local emergency management agencies. This definition does not include emergency management services, fire departments, law enforcement, or other agencies defined elsewhere under these definitions.

**EMERGENCY MANAGEMENT SYSTEM:** An emergency management system is an entity that includes all organizations involved in the prevention of, mitigation against, preparedness for, response to, and recovery from disasters or emergencies. This definition does not include military functions.

**EMERGENCY MEDICAL SERVICE:** An emergency medical service is an entity that provides the delivery of care as required by an emergency. This definition includes the care and transportation of individuals by ambulance services and the performance of authorized emergency care by a physician, professional nurse, a licensed physician assistant, or other authorized attendant.

**EMPLOYER/BUSINESS:** An employer/business is an institution, organization, person, or other entity that pays a salary or wages to an employee(s). This definition does not include the United States, any state or political subdivision of a state, or any agency thereof as an employer.

**FAITH INSTITUTION:** A faith-based or religious institution is a church, ecclesiastical, or denominational organization at which nonprofit religious services and activities are regularly conducted, and any bona fide religious group that does not maintain a specific place of worship. "Religious institution" includes any separate group or corporation that forms an integral part of a religious institution that is exempt from Federal income tax under the provisions of section 501(c)(3) of the Internal Revenue Code, and that is primarily supported by funds solicited inside its own membership or congregation.

**FIRE DEPARTMENT:** A fire department is a federal, state, or local fire department operating with the intent and purpose of carrying out the duties, functions, powers, and responsibilities normally associated with a fire department, including the protection of life and property against fire, explosions, and other hazards. This definition includes both paid and voluntary fire departments.

**GOVERNMENTAL PUBLIC HEALTH AGENCY:** A governmental public health agency is an organization designated by the federal, state, or local government (or its designee) having the usual powers and duties of a board of health or health department to protect and preserve the public's health.

**HOME HEALTH CARE:** Home health care is an agency that furnishes medical and non-medical services to ill, disabled, or infirm individuals in their homes or residences.

# The Public Health System

---

**HOSPITAL:** A hospital is an institution that, under the supervision of licensed doctors, primarily provides inpatient services for individuals who are sick, injured, or disabled. This definition includes rehabilitative facilities and psychiatric hospitals, but not facilities that primarily provide skilled nursing care (such as nursing homes and other long term facilities).

**LABORATORY:** A laboratory is a facility for biological, serological, biophysical, cytological, and pathological tests, as well as a facility for the chemical or other examination of materials from water, air, or other substances.

**LAW ENFORCEMENT:** Law enforcement is a public service organization that is publically funded and whose principal activities pertain to crime prevention, control, reduction of crime, or to enforcement of the law.

**LONG TERM CARE FACILITY:** A long term care facility is a skilled nursing facility, intermediate care facility, assisted living facility, home for the aged, or board and care facility.

**MENTAL HEALTH SERVICE:** A mental health service is a medical or non-medical service designed to address behavioral and mental health issues. A mental health professional includes psychiatrists, psychologists, licensed social workers, licensed professional counselors, psychiatric nurse specialists, and psychotherapists.

**PUBLIC:** Public is an individual or a group of individuals who are not subordinate, functionally related, or connected to any federal, state, local governmental agencies, or to any of the other public health agents defined herein.

**SCHOOL:** A school is a public or private educational institution encompassing kindergarten through twelfth grade, and post-secondary educational institutions, including vocational and technical schools. This definition does not include day care centers.

**SENIOR ELECTED OFFICIAL AT THE LOCAL, STATE, AND FEDERAL LEVELS:** A senior elected official is to be defined in each individual jurisdiction.

**SPECIALIZED PLANNING OR RESPONSE TEAM:** A specialized planning or response team is a complement of individuals organized with the intent of providing a specified aspect of emergency preparedness, planning, or response in accordance with standards developed by a federal, state, local emergency management agency, or Department of Homeland Security.

**TRANSIT:** Transit is mass transportation by a conveyance that provides regular and continuing general or special transportation to the public. This definition does not include school bus, charter, or sightseeing transportation.

**TRIBAL HEALTH:** Tribal health is a health program or facility funded, in whole or in part, by the Indian Health Service of the Department of Health and Human Services, and that benefits American Indian and Alaska Native people. Tribal health programs or facilities are administered directly by the Indian Health Service, or by an Indian tribe or organization pursuant to certain contractual arrangements.